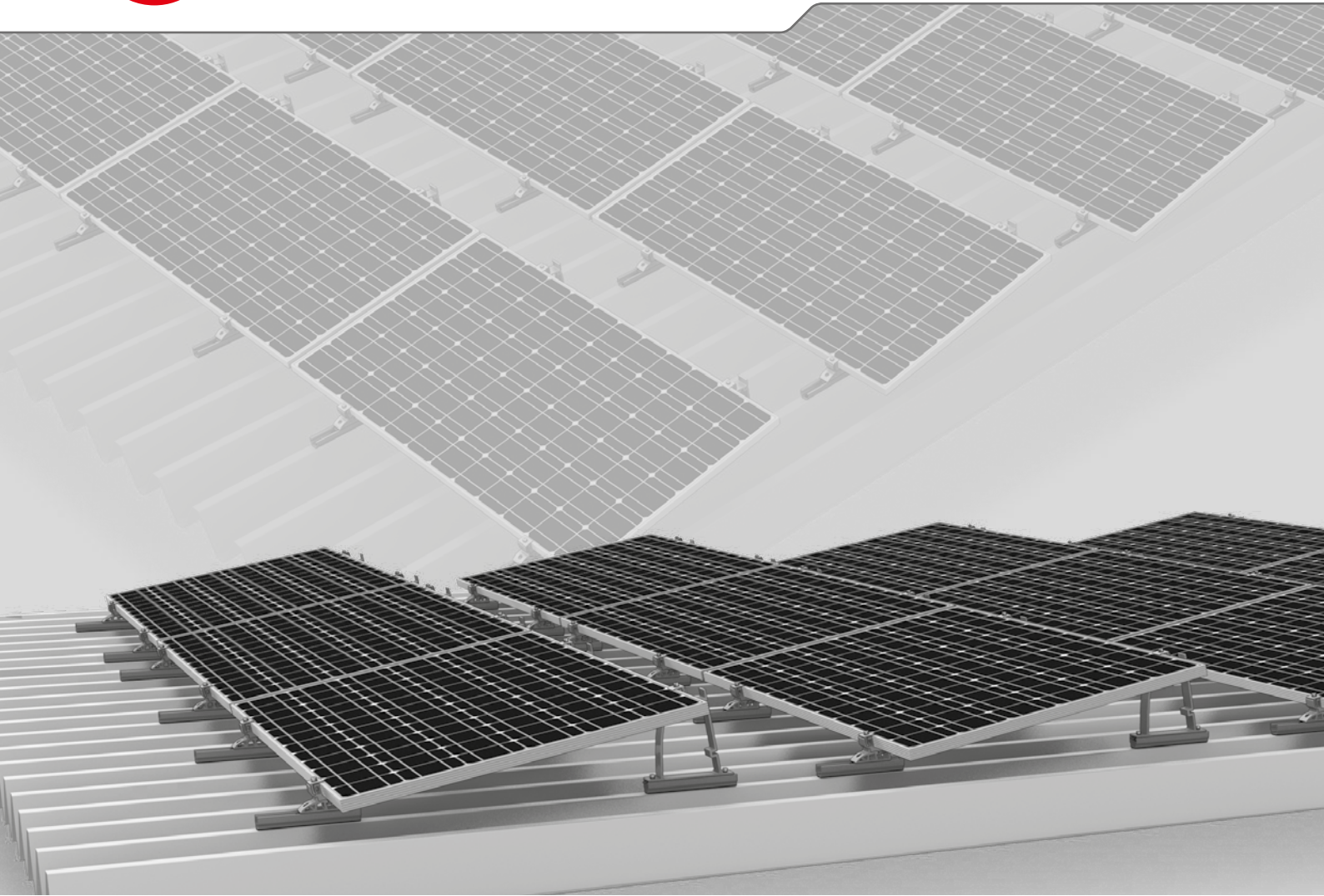




# S-Dome Small System



- ▶ For a roof inclination of up to 15° on trapezoidal sheet metal
- ▶ Economical in terms of materials and transportation; clever connections and strong holding power
- ▶ The perfect combination of the all-round MultiRail component and load-optimised, slim elevations



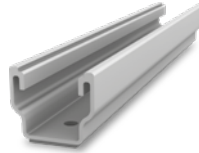
## Components



**Dome S1000 Small**  
Narrow elevation module support element

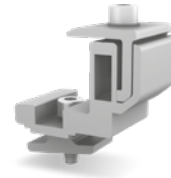


**Dome SD Small**  
Narrow module support element



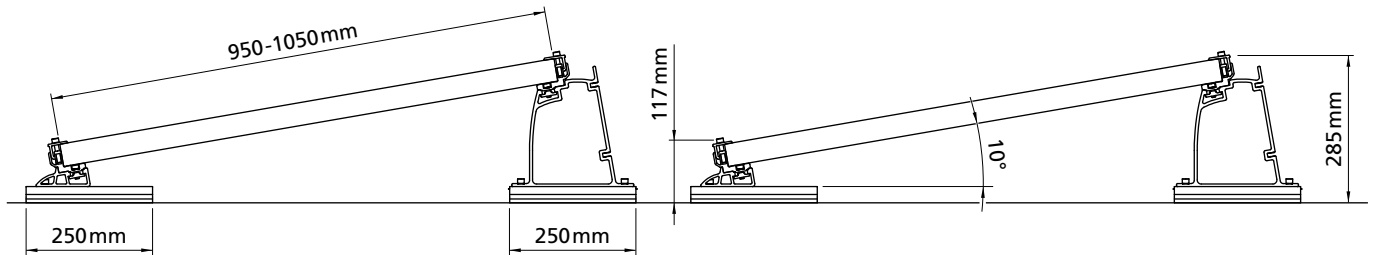
**MultiRail 25/4**  

- ▶ Length 250 mm
- ▶ With four boreholes for roofs with up to 15° inclination



**FlexClamp Small**  

- ▶ For clamping on the long side of module
- ▶ Height adjustable



## Technical data

S-Dome Small	
Scope of application	Flat or pitched roofs $\leq 15^\circ$ with trapezoidal sheet metal roofing
Fastening type / roof fixture	Attached with drilling screws in trapezoidal sheets, parallel to raised crests
Requirements	<ul style="list-style-type: none"> <li>▶ Sheet thickness for aluminium/steel: min. 0.5 mm</li> <li>▶ Tensile strength for aluminium: 165 N/mm<sup>2</sup></li> <li>▶ Tensile strength for steel: acc. to approval min. S235 in acc. with DIN EN 10025-1</li> <li>▶ Crest width: min. 22 mm</li> <li>▶ Crest spacing: independent of crest distance</li> </ul>
Inclination angle	10°
Material	<ul style="list-style-type: none"> <li>▶ Mounting rails, Dome SD Small, Dome S1000 Small, FlexClamp Small: Aluminium (EN AW-6063 T66/ EN AW-6082 T6); EPDM</li> <li>▶ Small parts: Stainless steel (1.4301) A2</li> </ul>